



CONSTRUCTION DETAILS

AEROLON®
THERMAL INSULATING COATING + TAPE

TNEMEC COMPANY, INC.

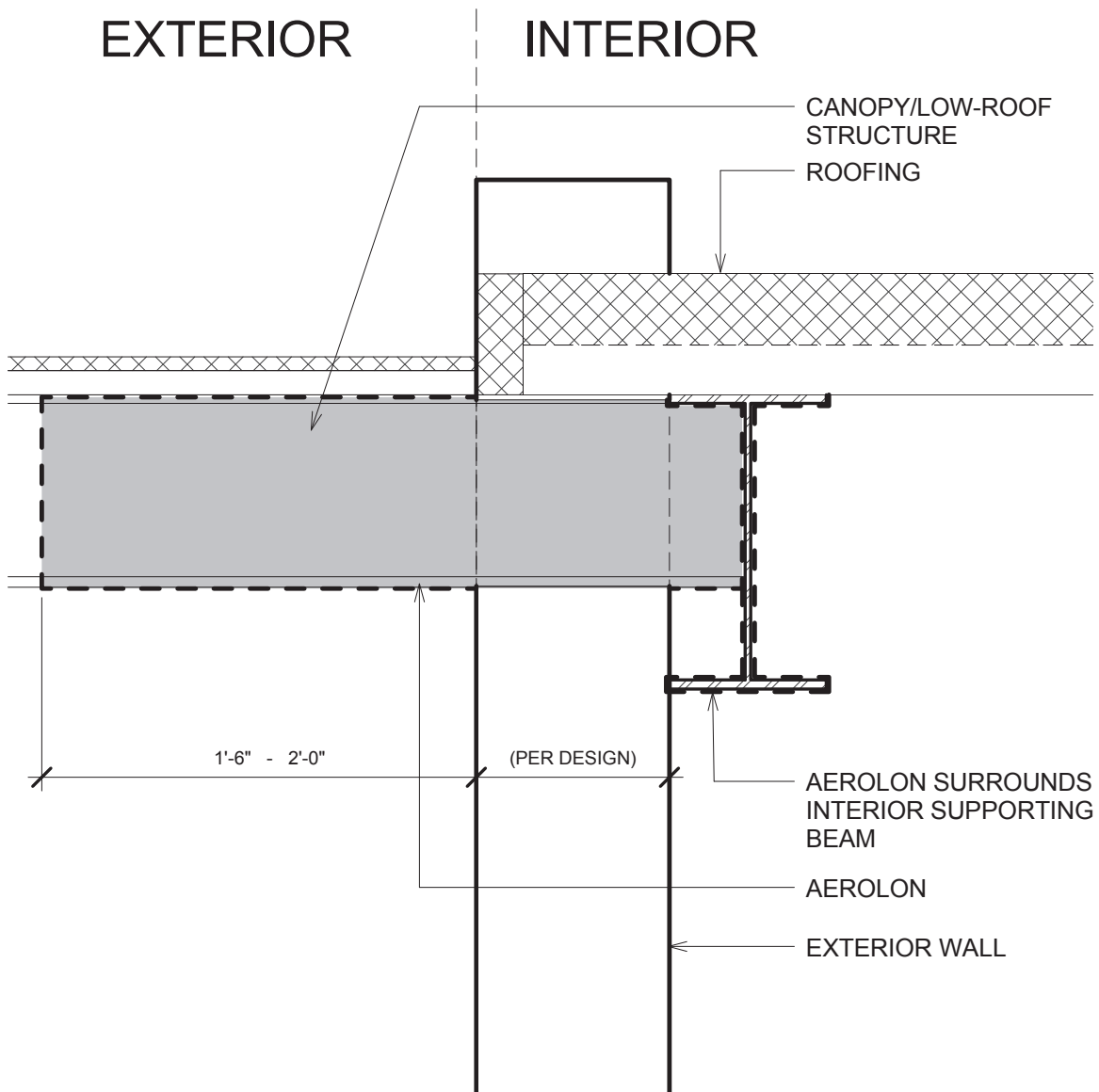
6800 Corporate Drive, Kansas City, Missouri, USA 64120
+1 816-483-3400 tnemec.com

Published technical data, instructions, and pricing are subject to change without notice. Contact your Tnemec technical representative for current technical data, instructions, and pricing. Warranty information: The service life of Tnemec's coatings will vary. For warranty, limitation of seller's liability, and product information, please refer to Tnemec's Product Data Sheets at tnemec.com or contact your Tnemec Technical Representative. 6/2019

TABLE OF CONTENTS

- ASD-01** Exterior Wall Section — Through Wall Canopy Structure
- ASD-02** Exterior Wall Section — Through Wall HSS
- ASD-03** Exterior Wall Section — Through Wall Beam (Short)
- ASD-04** Exterior Wall Section — Through Wall Beam
- ASD-05** Exterior Wall Section — Cantilevered Condition
- ASD-06** Exterior Wall Section — Brick Lintel
- ASD-07** Floor Section — Occupied Above/Open Below
- ASD-08** Roof Section — Structural Penetration
- ASD-09** Roof Section — Integral Gutter
- ASD-10** Relief Angle
- ASD-11** Typical Precast Sill / Steel Lintel
- ASD-12** Storefront Window Frame
- ASD-13** Canopy
- ASD-14** Typical Roof Brow
- ASD-15** Rainscreen / Windowscreen
- ASD-16** Balcony
- ASD-17** Typical Window Opening
- ASD-18** Curtain Wall
- ASD-19** Roof Davit
- ASD-NOTES** Additional Notes

INNOVATION IN EVERY COAT.™



SCALE: NTS

GENERAL NOTE:

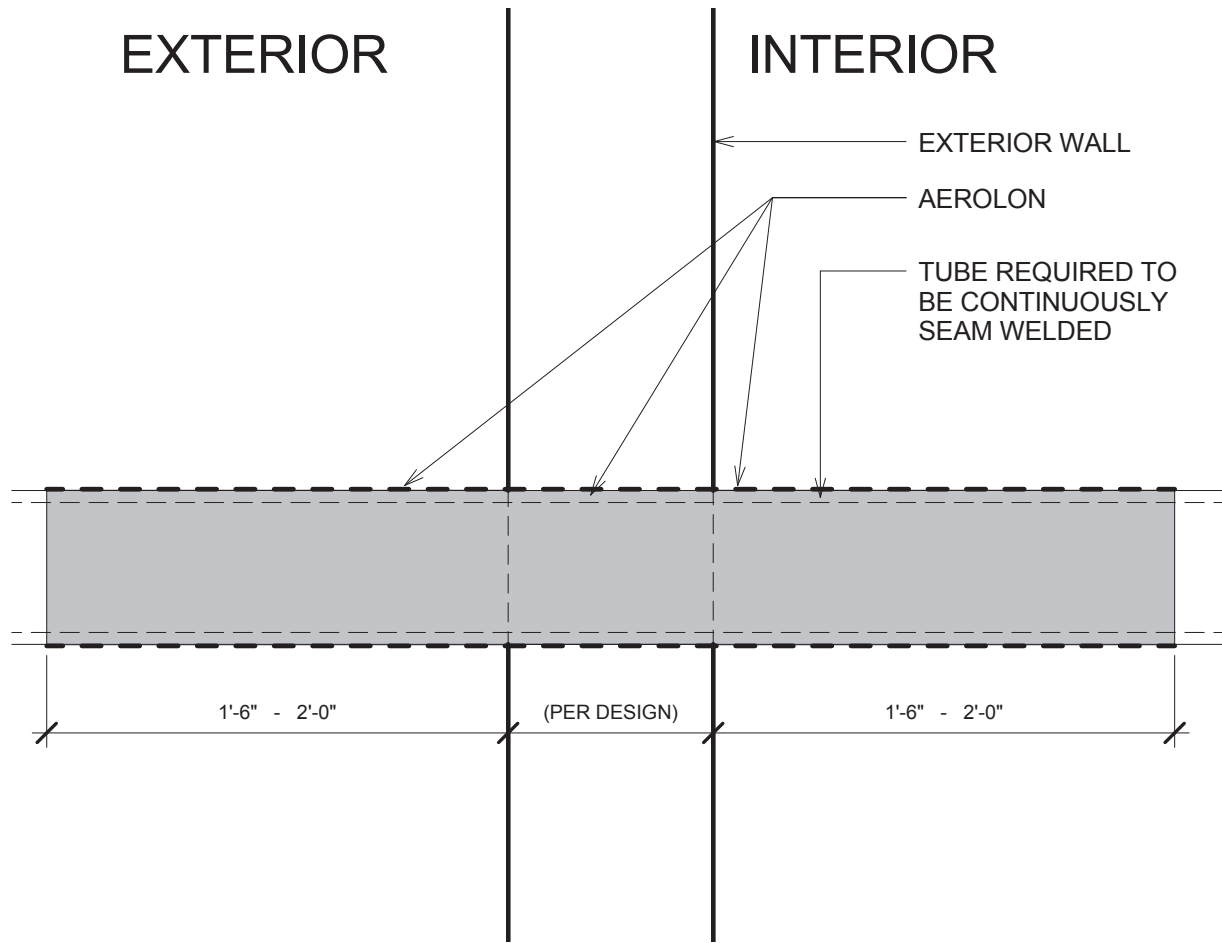
1. FOR SPECIFIC AEROLON THICKNESS, REFER TO PROJECT SPECIFICATION.
2. INBOARD AEROLON COVERAGE AREA CAN VARY DEPENDING ON PROJECT.
CONTACT YOUR TNEMEC COATINGS CONSULTANT FOR SPECIFIC RECOMMENDATIONS.

TNEMEC AEROLON STANDARD DETAILS

EXTERIOR WALL SECTION
THROUGH WALL CANOPY STRUCTURE

NO. ASD-01

REV.0



SCALE: NTS

GENERAL NOTES:

1. DEPENDING ON LENGTH OF EXTERIOR EXPOSED BEAM, ADDITIONAL AEROLON THICKNESS MAY BE REQUIRED.
2. FOR SPECIFIC AEROLON THICKNESS, REFER TO PROJECT SPECIFICATION.
3. INBOARD AEROLON COVERAGE AREA CAN VARY DEPENDING ON PROJECT.
CONTACT YOUR TNEMEC COATINGS CONSULTANT FOR SPECIFIC RECOMMENDATIONS.

TNEMEC AEROLON STANDARD DETAILS

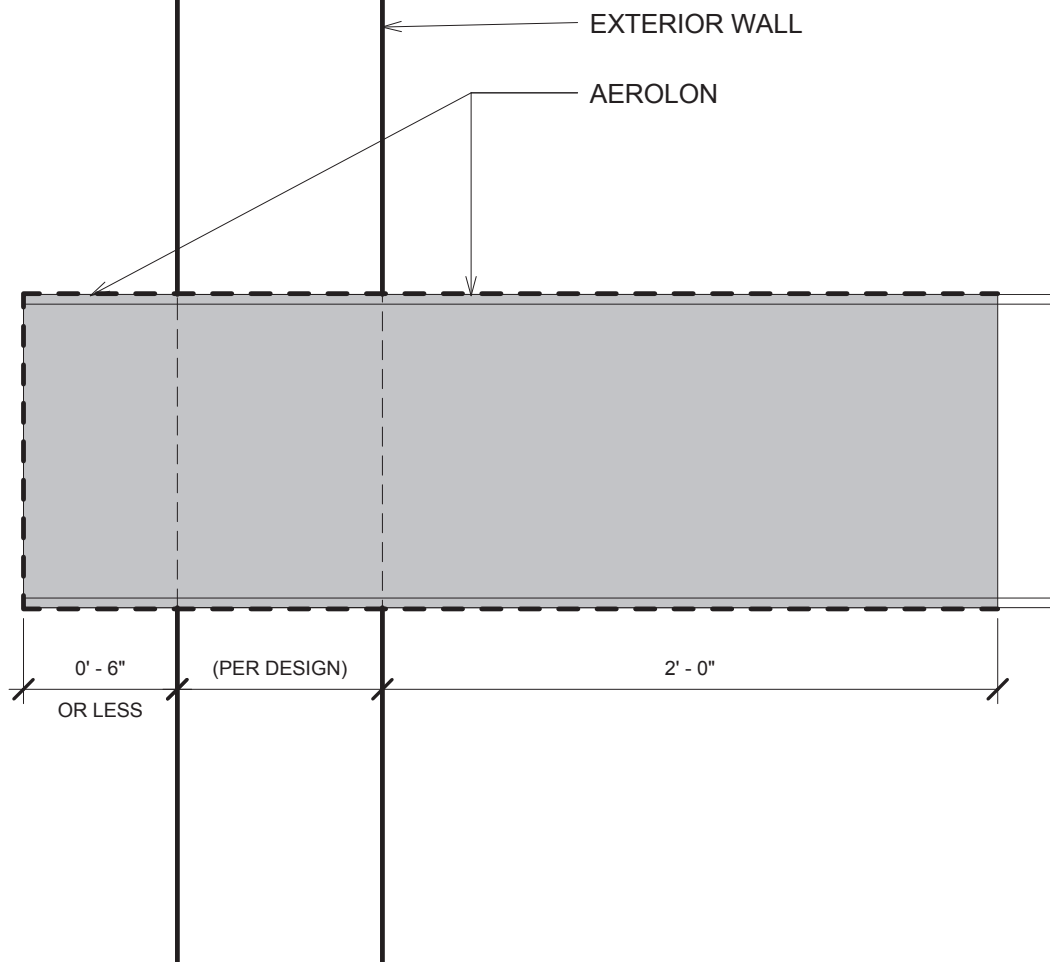
EXTERIOR WALL SECTION
THROUGH WALL HSS

NO. ASD-02

REV.0

EXTERIOR

INTERIOR



SCALE: NTS

GENERAL NOTES:

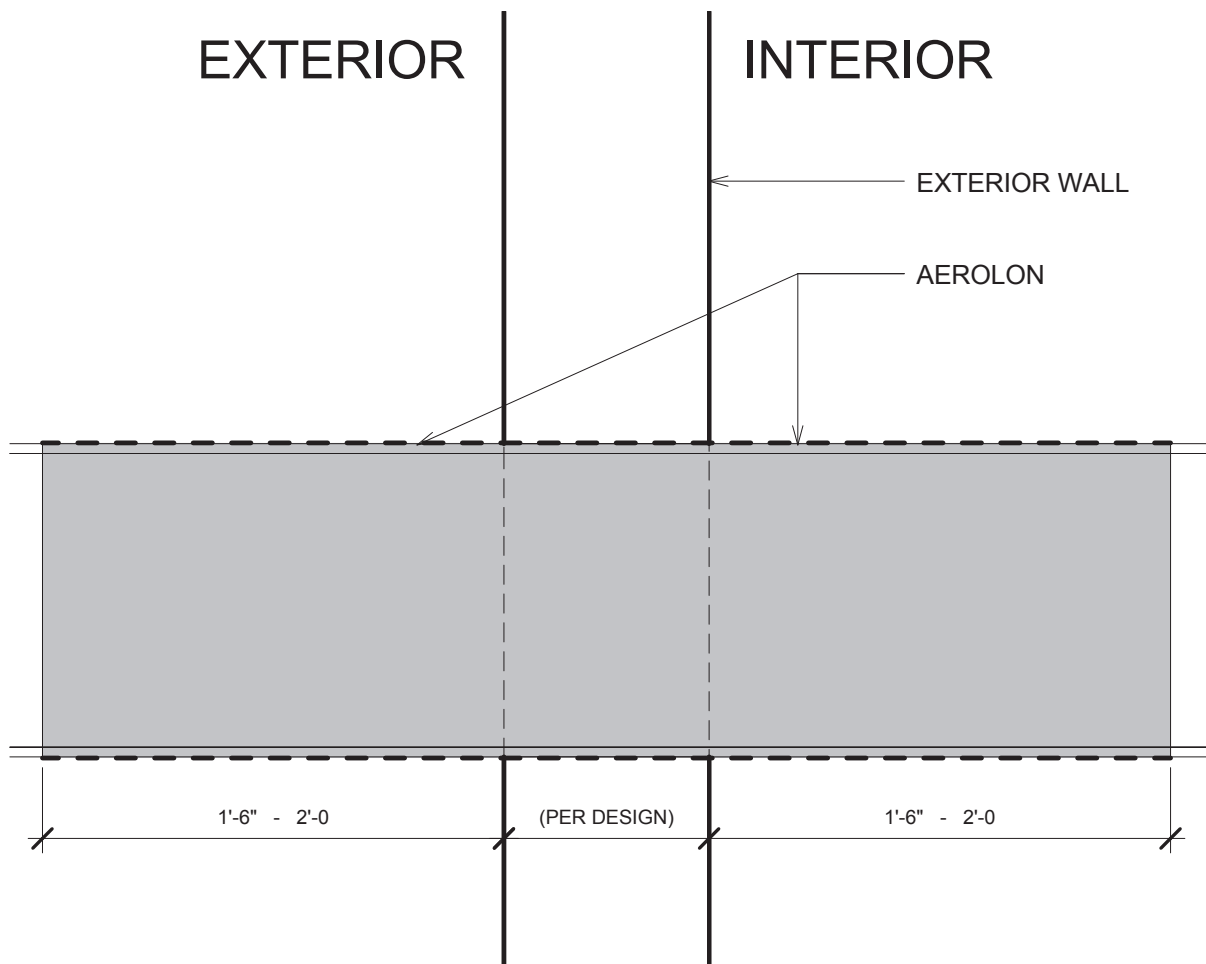
1. DUE TO LACK OF EXTERIOR EXPOSED BEAM, ADDITIONAL AEROLON THICKNESS MAY BE REQUIRED.
2. FOR SPECIFIC AEROLON THICKNESS, REFER TO PROJECT SPECIFICATIONS.
3. INBOARD AEROLON COVERAGE AREA CAN VARY DEPENDING ON PROJECT.
CONTACT YOUR TNEMEC COATINGS CONSULTANT FOR SPECIFIC RECOMMENDATIONS.

TNEMEC AEROLON STANDARD DETAILS

EXTERIOR WALL SECTION
THROUGH-WALL BEAM (SHORT)

NO. ASD-03

REV.0



SCALE: NTS

GENERAL NOTES:

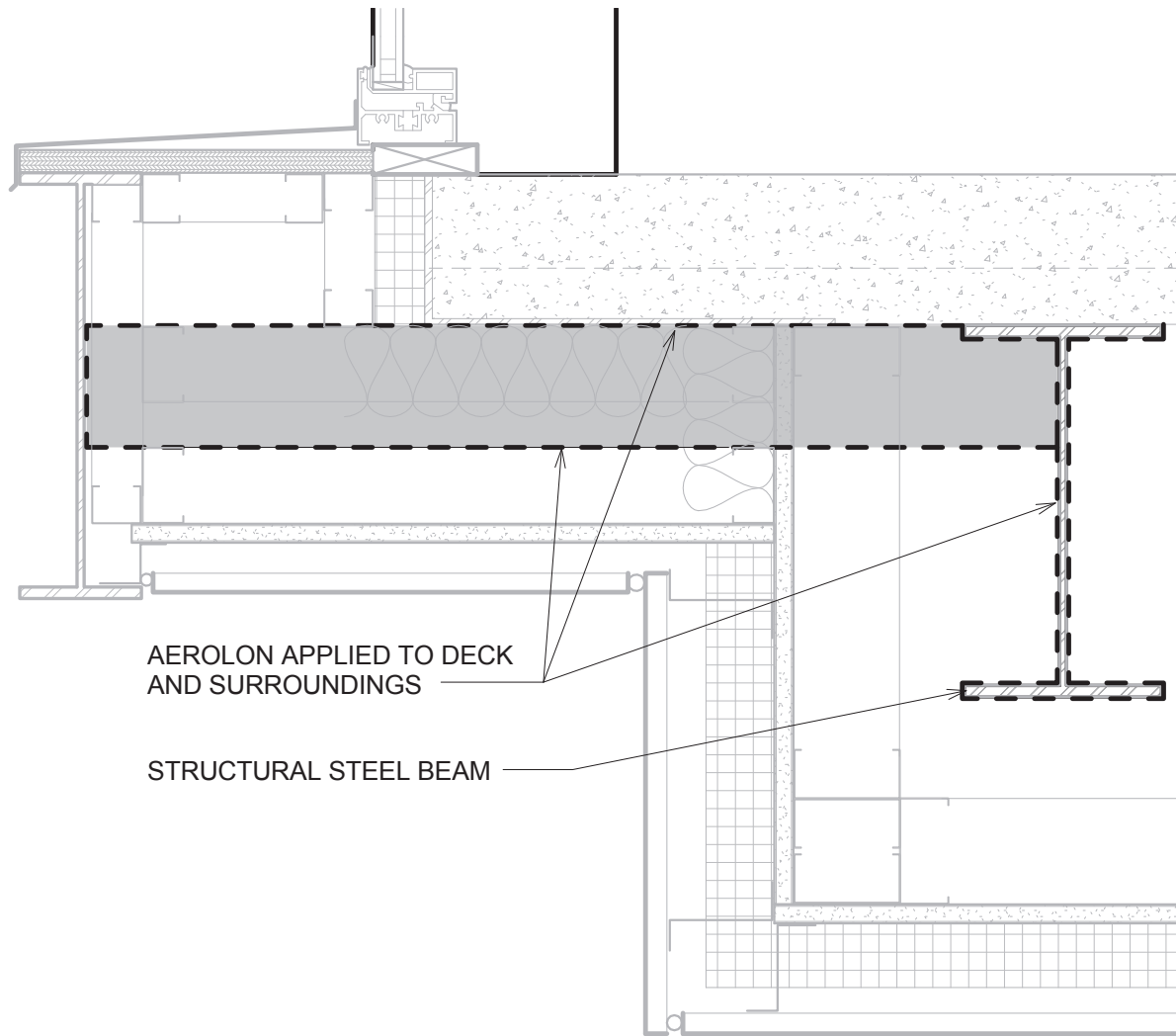
1. DEPENDING ON LENGTH OF EXTERIOR EXPOSED BEAM, ADDITIONAL AEROLON THICKNESS MAY BE REQUIRED.
2. FOR SPECIFIC AEROLON THICKNESS, REFER TO PROJECT SPECIFICATION.
3. INBOARD AEROLON COVERAGE AREA CAN VARY DEPENDING ON PROJECT.
CONTACT YOUR TNEMEC COATINGS CONSULTANT FOR SPECIFIC RECOMMENDATIONS.

TNEMEC AEROLON STANDARD DETAILS

**EXTERIOR WALL SECTION
THROUGH-WALL BEAM**

NO. ASD-04

REV.0



SCALE: NTS

GENERAL NOTES:

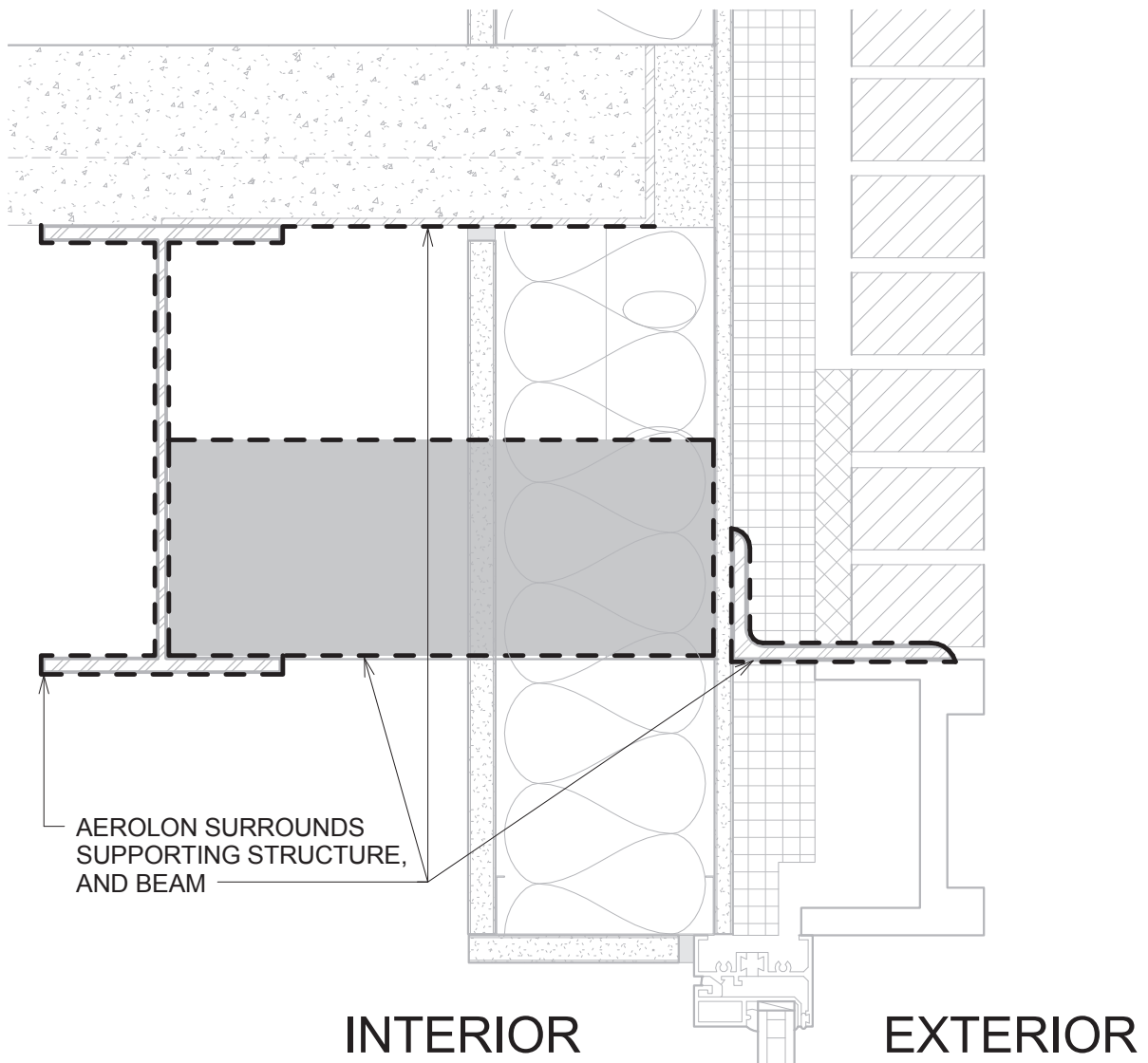
1. FOR SPECIFIC AEROLON THICKNESS, REFER TO PROJECT SPECIFICATION.

TNEMEC AEROLON STANDARD DETAILS

EXTERIOR WALL SECTION
CANTILEVERED CONDITION

NO. ASD-05

REV.0



SCALE: 3" = 1'-0"

GENERAL NOTES:

1. BRICK EXTERIOR WALL ASSEMBLY VARIES PER PROJECT DESIGN
2. IF BRICK LINTELS ARE TO BE COATED WITH AEROLON, DO NOT COAT PORTIONS IN CONTACT WITH BRICK OR MORTAR.
3. FOR SPECIFIC AEROLON THICKNESS, REFER TO PROJECT SPECIFICATION

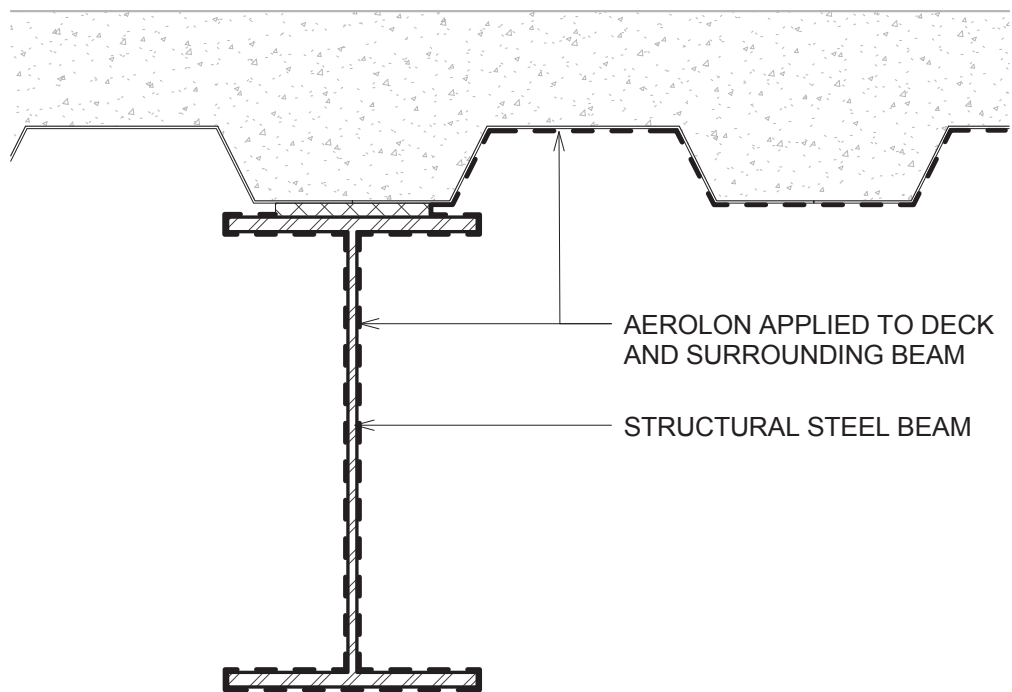
TNEMEC AEROLON STANDARD DETAILS

EXTERIOR WALL SECTION
BRICK LINTEL

NO. ASD-06

REV.0

OCCUPIED FLOOR



AEROLON APPLIED TO DECK
AND SURROUNDING BEAM

STRUCTURAL STEEL BEAM

OPEN SPACE

SCALE: 3" = 1'-0"

GENERAL NOTES:

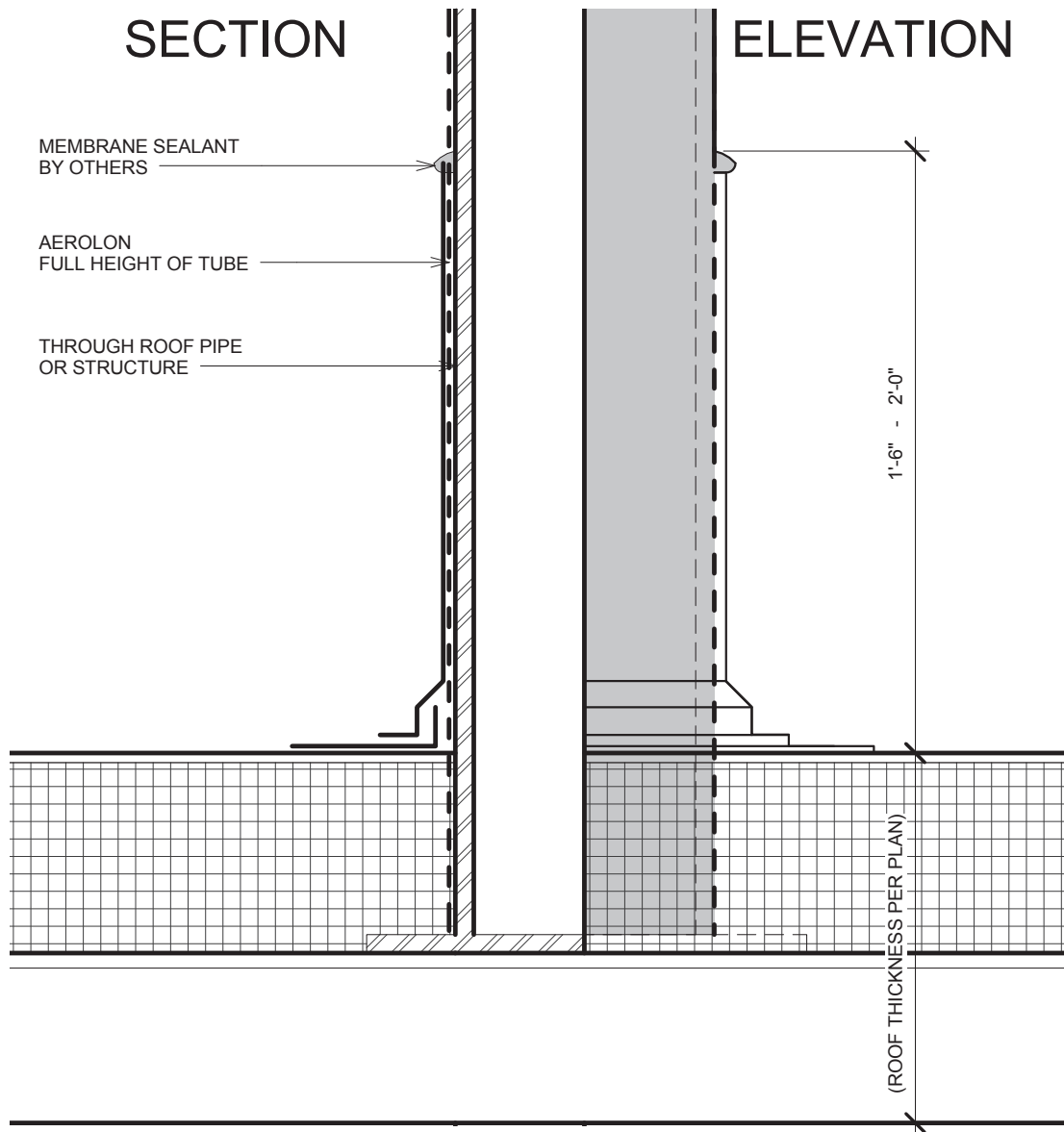
1. FOR SPECIFIC AEROLON THICKNESS, REFER TO PROJECT SPECIFICATION.

**TNEMEC AEROLON
STANDARD DETAILS**

**FLOOR SECTION
OCCUPIED ABOVE / OPEN BELOW**

NO. ASD-07

REV.0



SCALE: NTS

GENERAL NOTE:

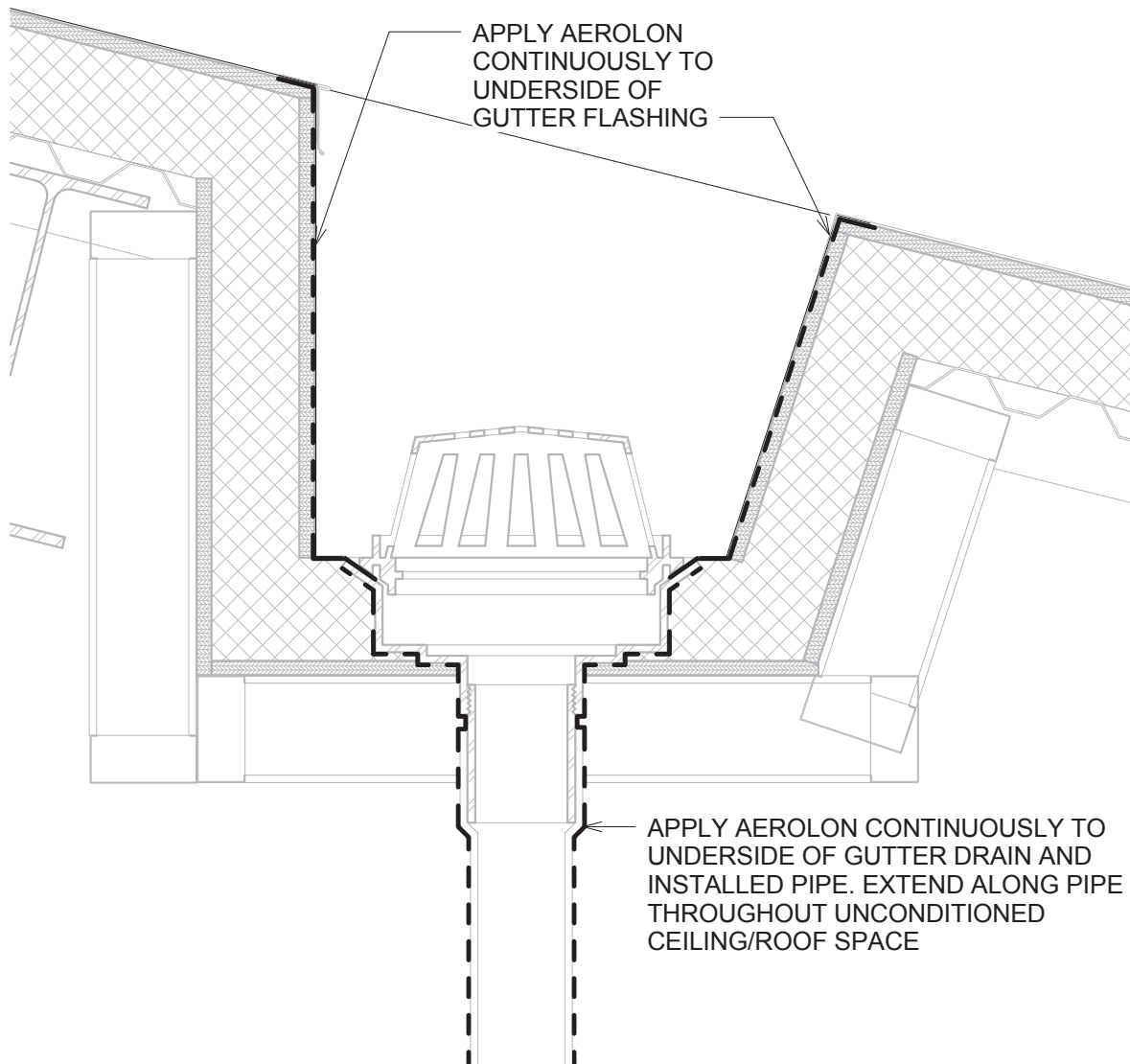
1. FOR SPECIFIC AEROLON THICKNESS, REFER TO PROJECT SPECIFICATION.

TNEMEC AEROLON STANDARD DETAILS

ROOF SECTION
STRUCTURAL PENETRATION

NO. ASD-08

REV.0



SCALE: NTS

GENERAL NOTES:

1. ROOF AND GUTTER ASSEMBLY VARIES PER PROJECT DESIGN
2. FOR SPECIFIC AEROLON THICKNESS, REFER TO PROJECT SPECIFICATION.

TNEMEC AEROLON STANDARD DETAILS

ROOF SECTION
INTEGRAL GUTTER

NO. ASD-09

REV.0

COAT SERIES
971 AEROLON
UP TO 18"

COAT UNDERSIDE
AND LENGTH OF
RELIEVING ANGLE

BLOCK OUT AND
HOLD SERIES 971
BACK 3 1/2"

NOTE: HOLD SERIES 971 AEROLON BACK 2" EACH SIDE OF ANY WELD.

 **SERIES 971 AEROLON**

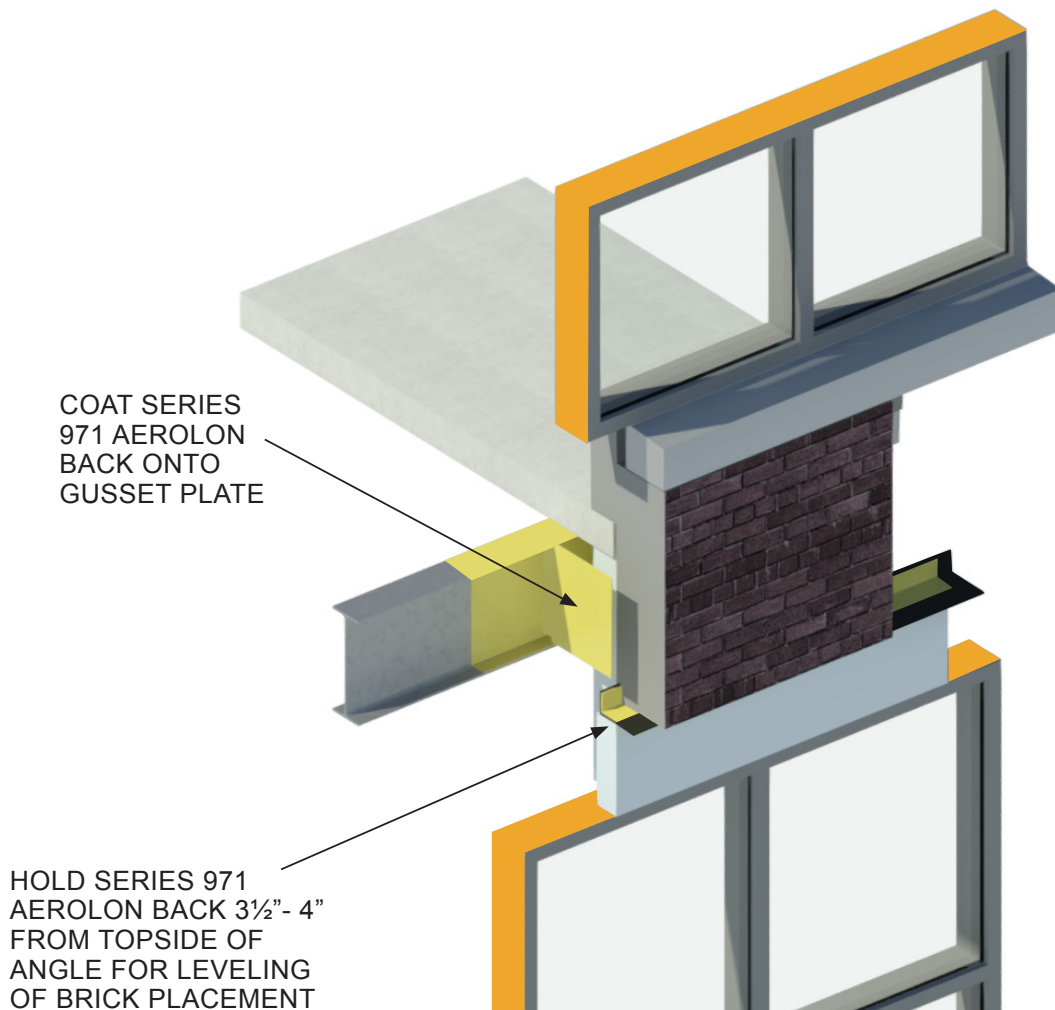
**See attached notes for surface
preparation, primers and thickness.*

TNEMEC AEROLON STANDARD DETAILS

RELIEF ANGLE

NO. ASD-10

REV.0



NOTE: 2 LAYERS OF SERIES 945 AEROLON TAPE MAY BE USED ON RELIEVING ANGLE IN LIEU OF SERIES 971 AEROLON.

SERIES 971 AEROLON
 SERIES 945 AEROLON TAPE

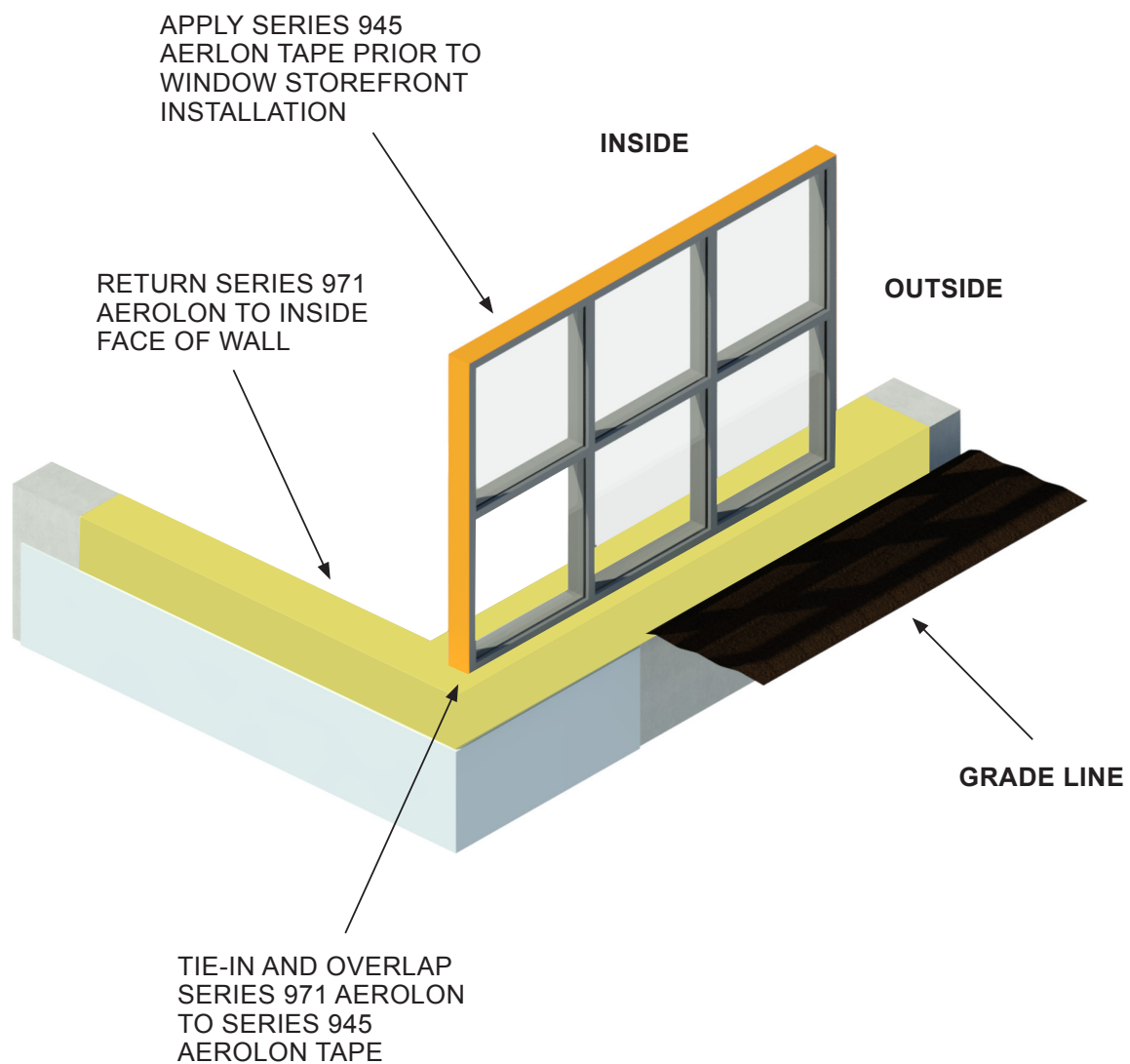
**See attached notes for surface preparation, primers and thickness.*

TNEMEC AEROLON STANDARD DETAILS

TYPICAL PRECAST SILL / STEEL LINTEL

NO. ASD-11

REV.0



 **SERIES 971 AEROLON**
 **SERIES 945 AEROLON TAPE**

**See attached notes for surface
preparation, primers and thickness.*

TNEMEC AEROLON STANDARD DETAILS

STOREFRONT WINDOW FRAME



NO. ASD-12

REV.0

OUTSIDE

INSIDE

COAT SERIES 971
AEROLON 18" AT
EACH OUTRIGGER
BEAM, RETURNING
18" INTO AMBIENT
SPACE

 SERIES 971 AEROLON
 SERIES 945 AEROLON TAPE

**See attached notes for surface
preparation, primers and thickness.*

TNEMEC AEROLON STANDARD DETAILS

CANOPY

NO. ASD-13



REV.0

COAT SERIES 971
AEROLON 18" BOTH
WAYS INBOARD
(36" TOTAL) AT EACH
OUTRIGGER BEAM

COAT SERIES 971
AEROLON 18"
OUTBOARD AT EACH
OUTRIGGER BEAM

INSIDE

OUTSIDE

 SERIES 971 AEROLON
 SERIES 945 AEROLON TAPE

**See attached notes for surface
preparation, primers and thickness.*

TNEMEC AEROLON STANDARD DETAILS

TYPICAL ROOF BROW

NO. ASD-14

REV.0

COAT SERIES 971
AEROLON 18" OUTBOARD
AND 18" INBOARD BOTH
WAYS (36" TOTAL) AT
EACH OUTRIGGER BEAM

OUTSIDE

INSIDE

- SERIES 971 AEROLON
- SERIES 945 AEROLON TAPE

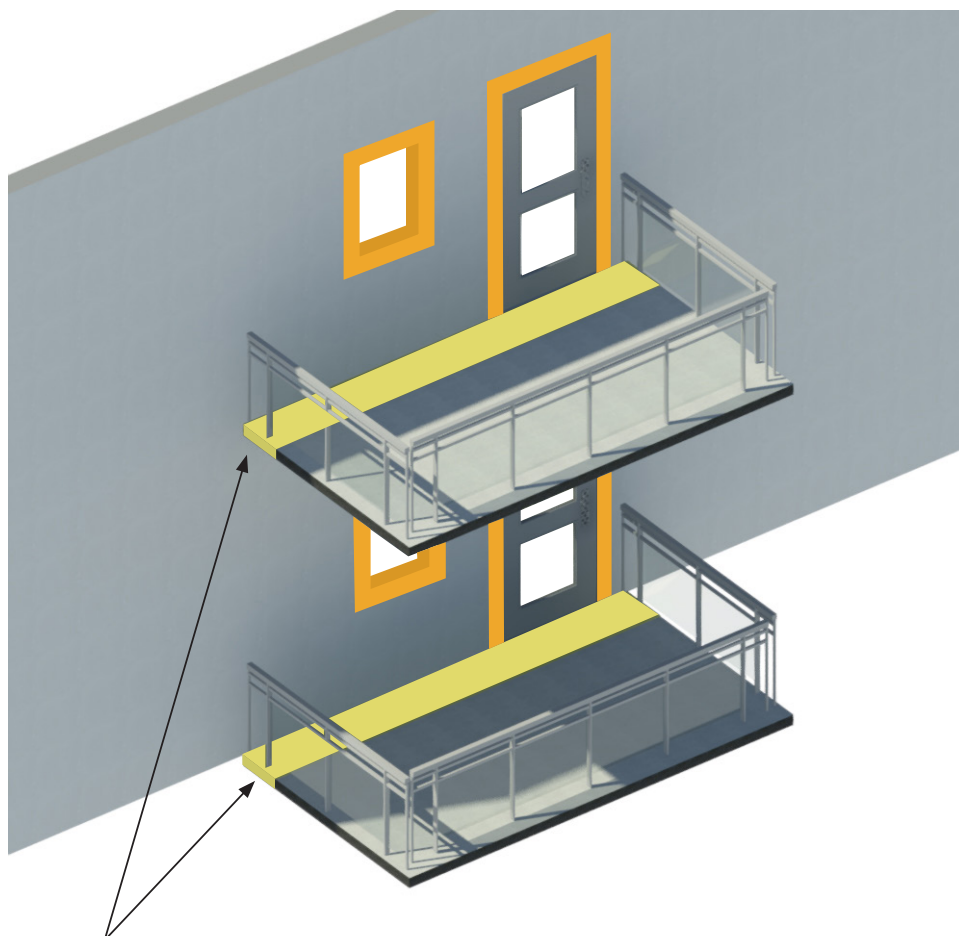
**See attached notes for surface preparation, primers and thickness.*

TNEMEC AEROLON
STANDARD DETAILS

RAINSCREEN / WINDSCREEN

NO. ASD-15

REV.0



APPLY SERIES 971 AEROLON
TO THE TOP, SIDES AND
BOTTOM OF CONCRETE
BALCONY 2' OUTBOARD
FROM THE WALL STRUCTURE

- SERIES 971 AEROLON
- SERIES 945 AEROLON TAPE

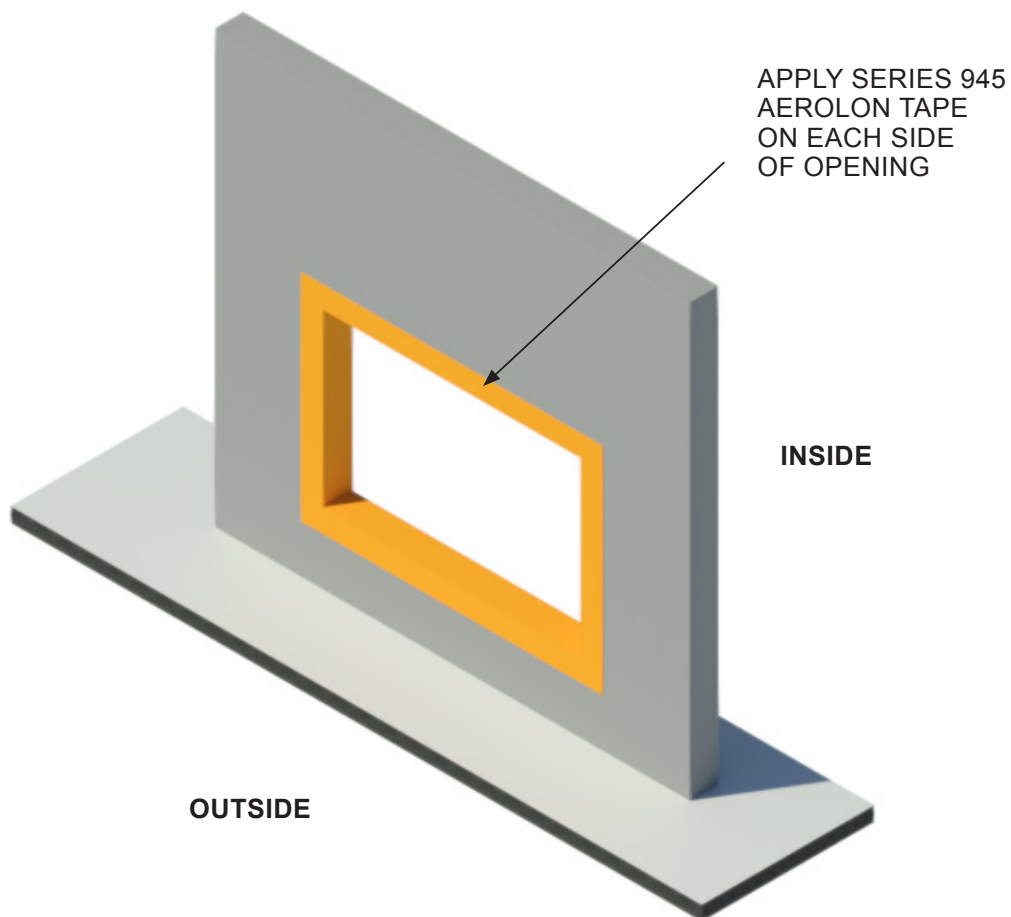
**See attached notes for surface
preparation, primers and thickness.*

TNEMEC AEROLON STANDARD DETAILS

BALCONY

NO. ASD-16

REV.0



 SERIES 945 AEROLON TAPE

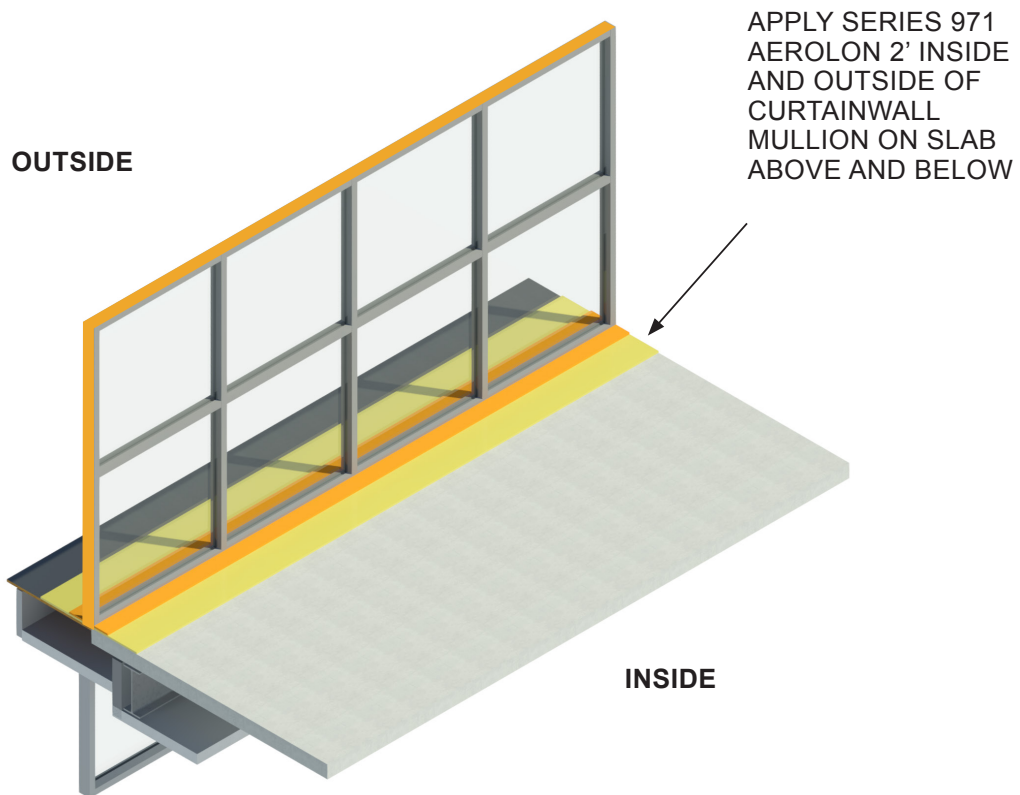
**See attached notes for surface
preparation, primers and thickness.*

TNEMEC AEROLON STANDARD DETAILS

TYPICAL WINDOW OPENING

NO. ASD-17

REV.0



- SERIES 971 AEROLON
- SERIES 945 AEROLON TAPE

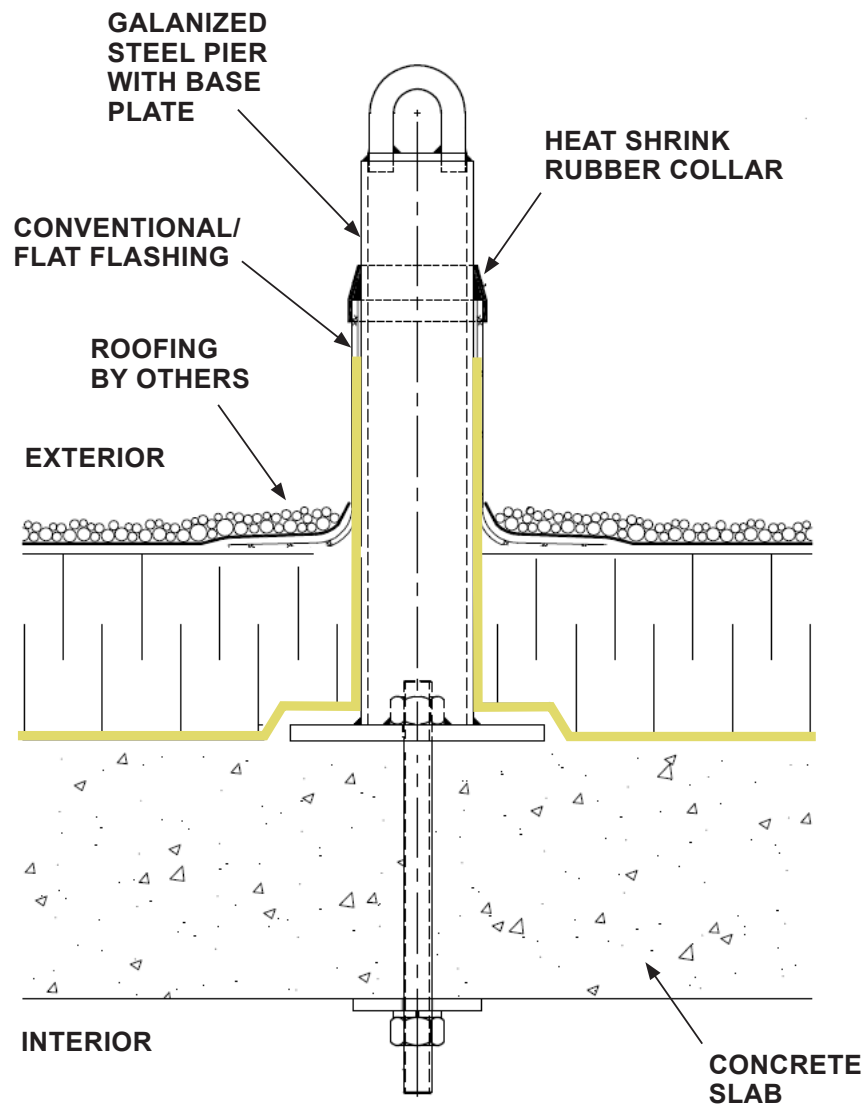
**See attached notes for surface preparation, primers and thickness.*

TNEMEC AEROLON STANDARD DETAILS

CURTAIN WALL

NO. ASD-18

REV.0



 **SERIES 971 AEROLON**

**See attached notes for surface preparation, primers and thickness.*

TNEMEC AEROLON STANDARD DETAILS

ROOF DAVIT

NO. ASD-19

REV.0

SURFACE PREPARATION:

- Exterior Exposure - SSPC-SP6
- Non-Exterior Exposed Area - SSPC-SP3

PRIMERS (STEEL):

- Series 394 Perime Prime

PRIMERS (GALVANIZED STEEL OR METAL DECKING):

- Series 1224 Epoxoline WB

PRIMERS (CONCRETE):

- Series 151-1051 Elasto-Grip FC
- Series v530 Omnithane

SERIES 971 AEROLON (STEEL):

Thickness:

- Steel W Shapes @ 60-100 mils
- Steel HHS Shapes @ 120-150 mils
- Steel Decking @ 120 mils

Distance:

- 36" overall inside/outside of building; must go in all directions if within 18".

SERIES 971 AEROLON (CONCRETE):

Thickness:

- Balconies @ 100-250 mils

Distance:

- 24" inside and outside for energy loss and condensation control on concrete slabs.

SERIES 975 AEROLON TAPE:

- Two (2) 60 mil layers over primer for all openings and concrete tie-ins for balconies.

**TNEMEC AEROLON
STANDARD DETAILS**

ADDITIONAL NOTES